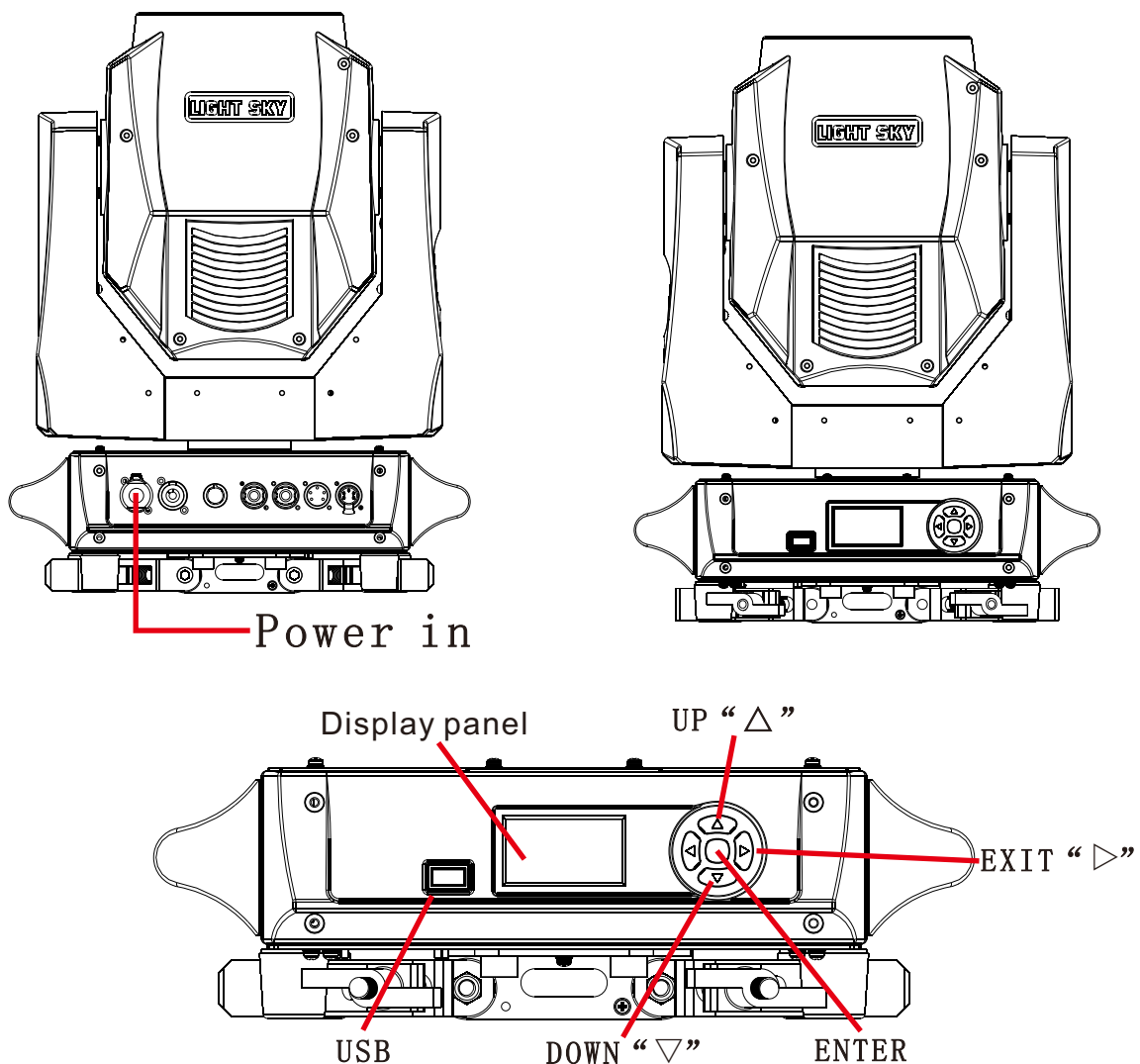


# The software upgrade method for the bumblebee II stage lighting fixtures

## Use USB to upgrade single stage lighting



Note that the upgrade files in the USB before the upgrade are saved in the form of the following original folder, and cannot be used in compressed file format!!

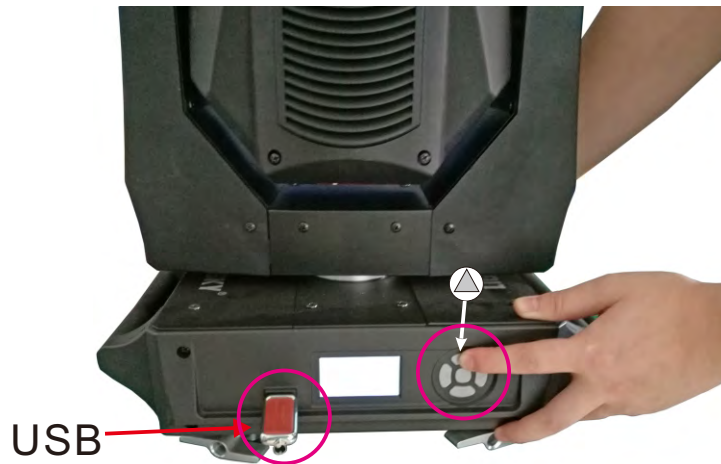


Latest software version number:  
XY: V1.14  
10M:V1.09  
DIS Bord: V2.09

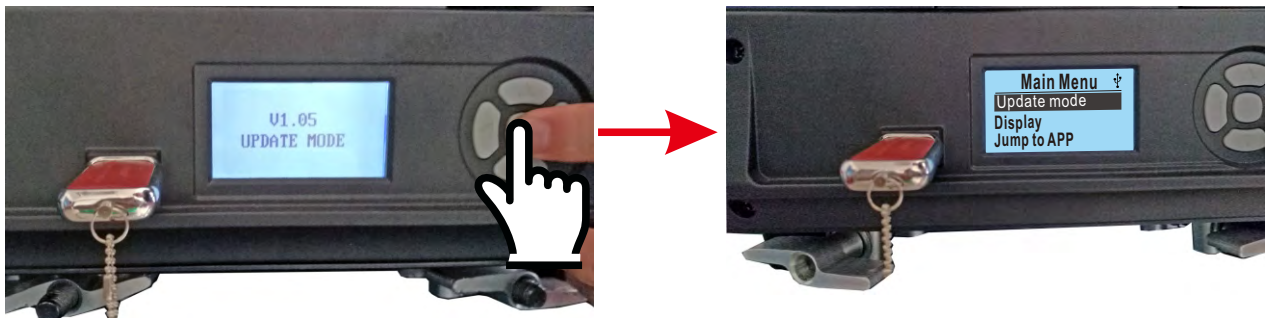
# Single stage lighting upgrade step

(note that the software upgrade cannot have DMX signal access)

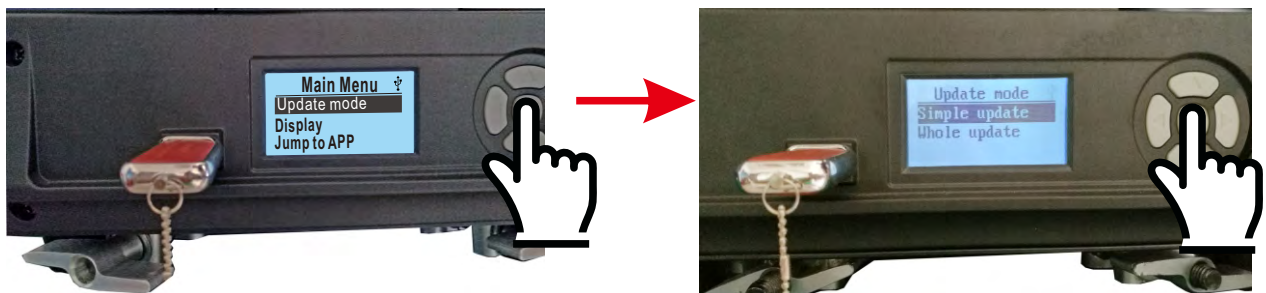
1. Turn off the stage lighting power, insert the USB, then hold the "△" button to restore the power;



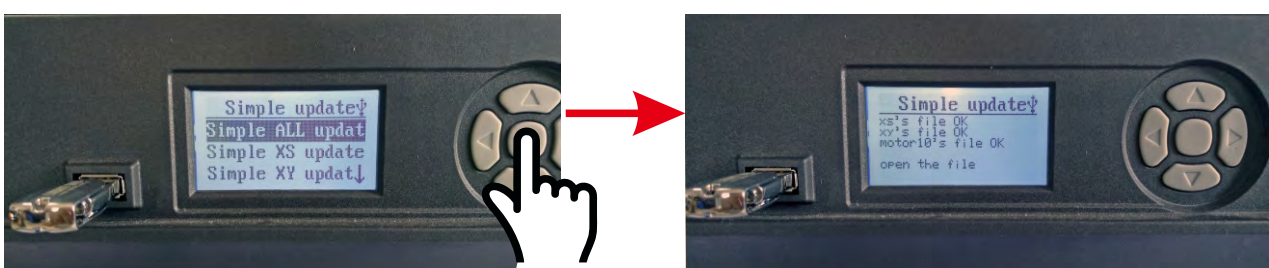
2. Display panel displays "software version number and UPDATE MODE", and press "ENTER" to ENTER the main menu. Select "upgrade mode" menu;



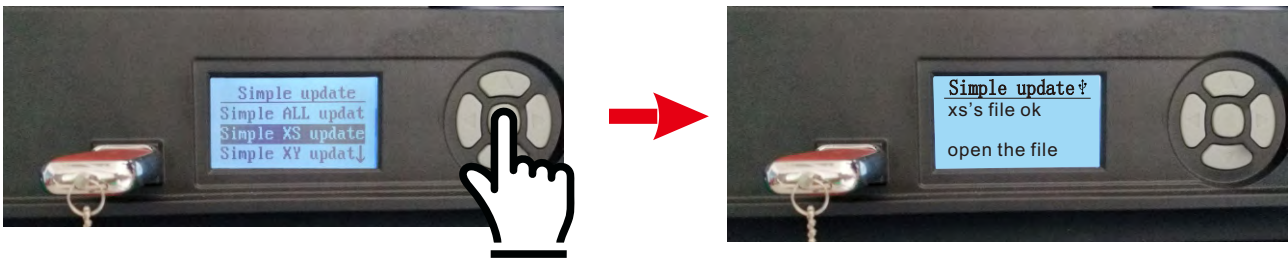
3. "Update mode(ENTER)" → "Simple update(ENTER)" ;



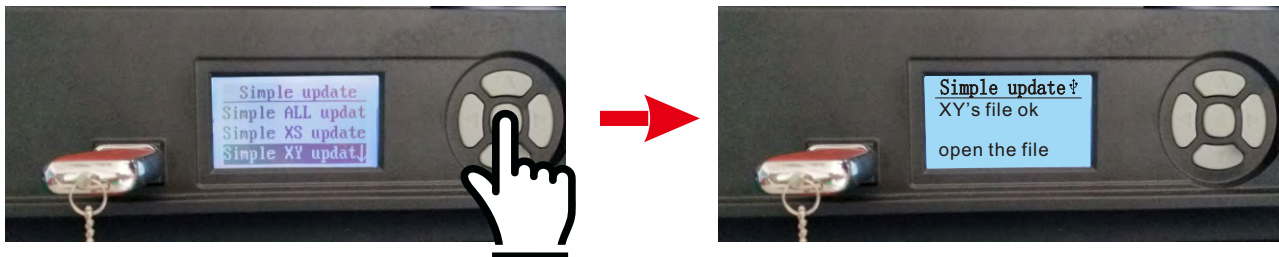
4. "Simple All update (ENTER)" → All software can be updated at once;



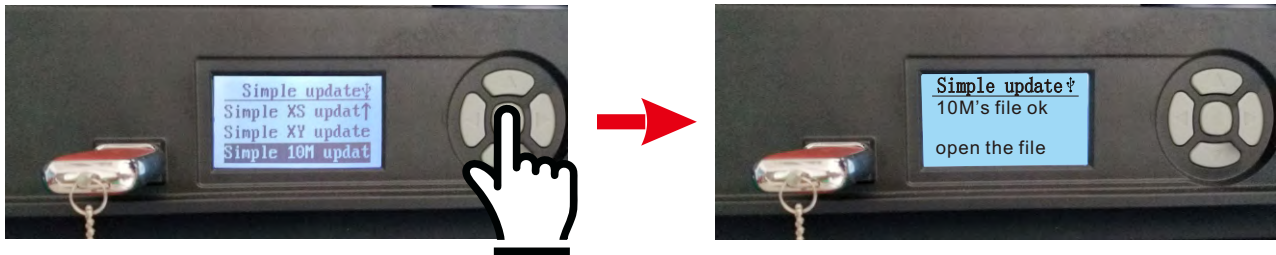
“Simple update (ENTER) ” → “Simple XS update” →Can update “display board” software;



“Simple update (ENTER) ” → “Simple XY update” →Can update “XY board” software;

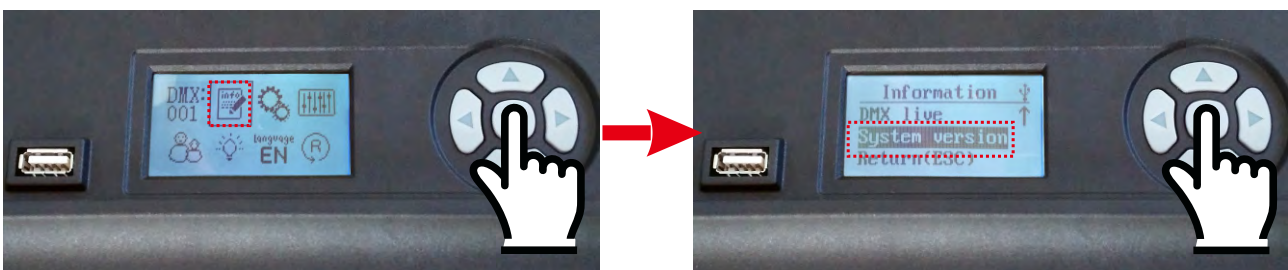


“Simple update (ENTER) ” → “Simple 10M update” →Can update “10M board” software.



5. Press the "Exit" button to Exit after the software upgrade is completed;

6. Check the software version information through the following steps;  
information(Enter)→System version(Enter)→version;



**Latest software version number:**  
**XY: V1.14**  
**10M:V1.09**  
**DIS Bord: V2.09**

